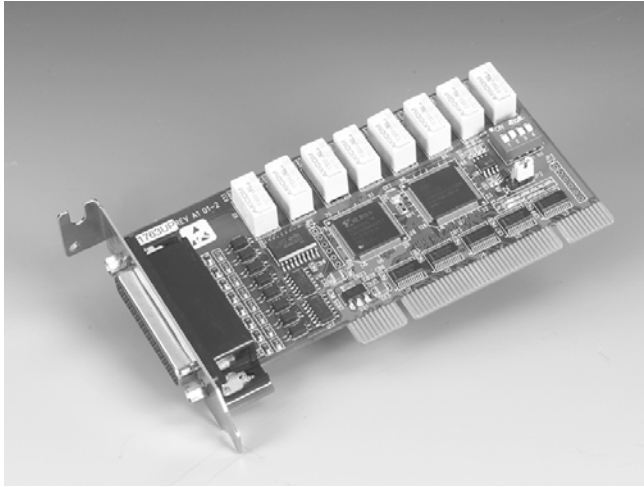


PCI-1763UP

Low-Profile 8-ch Relay and 8-ch Isolated Digital Input Card



Features

- 8 relay output channels and 8 isolated digital input channels
- LED indicators to show activated relays
- 8 Form C type relay output channels
- Output status read-back
- Retained relay output values when hot system reset
- High-voltage isolation on input channels (2,500 V_{DC})
- High ESD protection (2,000 V_{DC})
- High over-voltage protection (70 V_{DC})
- Wide input range (10 ~ 50 V_{DC})
- Interrupt handling capability
- Support Universal PCI Bus
- Low Profile PCI card
- BoardID™ switch

Introduction

PCI-1763UP relay actuator and isolated digital input card is an add-on card for the PCI bus. It provides 8 optically-isolated digital inputs with isolation protection of 2500 VDC for collecting digital inputs in noisy environments, and 8 relay actuators for serving as on/off control devices or small power switches. For easy monitoring, each relay is equipped with one red LED to show its on/off status. PCI-1763UP's eight optically-isolated digital input channels are ideal for digital input in noisy environments or with floating potentials. The low profile PCI form factor and universal PCI connector (V2.2 compliant), meet requirements for size and reduced power consumption.

Specifications

Isolated Digital Input

- **Channels** 8
- **Input Voltage** Logic 0: 3 V max.
Logic 1: 10 V min. (50 V max.)
- **Input Current** 3.16 mA @ 10 V_{DC}
17.3 mA @ 50 V_{DC}
- **Interrupt Capable Ch.** 8
- **Isolation Protection** 2,500 V_{DC}
- **Overvoltage Protection** 70 V_{DC}
- **Opto-isolator Response** 25 μs
- **Input Resistance** 2.8 KΩ

Relay Output

- **Channels** 8
- **Relay Type** DPDT, Form C
- **Contact Rating** 240 V_{AC} @ 0.25 A, or 30 V_{DC} @ 1 A
- **Relay on Time** 5 ms max.
- **Relay off Time** 4 ms max.
- **Life Span** 1 x 10⁷ @ 6 V/100 mA
- **Resistance** Contact: < 50 mΩ
Insulation: 1 GΩ min. (at 500 V_{DC})

General

- **I/O Connector Type** DB44 female
- **Dimensions** 119.91 x 64.41 mm (Low-Profile MD1)
- **Power Consumption** +5V @ 107.5 mA (typical)
+5V @ 301.3 mA (max.)
- **Operating Temperature** 0 ~ 60° C (32 ~ 140° F) (refer to IEC 68-2-1,2)
- **Storing Temperature** -20 ~ 70° C (-4 ~ 158° F)
- **Storing Humidity** 5 ~ 95 % RH, non-condensing (refer to IEC 68-2-3)

Ordering Information

- **PCI-1763UP** 8-ch Relay and 8-ch Isolated DI card
- **PCL-10144-1** DB 44-pin cable, 1m
- **ADAM-3944** DB-44 Wiring Terminal for DIN-rail mounting

Pin Assignments

