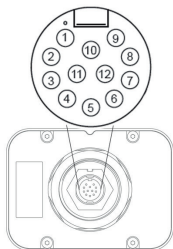


## IP67 Connection



# PanelPilot<sup>M</sup>

Connector	Pin Functions	Description	Colour
1	ESPI-CS2	SPI chip select	Black / White
2	ESPI-MISO	SPI master input, slave output	Blue / White
3	ESPI-CLK	SPI serial clock	Red / Black
4	ESPI-MOSI	SPI master output, slave input	Orange / Black
5	SDA	Serial data	Yellow / Black
6	SCL	Serial clock	White / Black
7	ALM2	Alarm output 2	White
8	ALM1	Alarm output 1	Yellow
9	IN1	Analogue voltage input 1 (Maximum of 40V d.c. wrt 0v)	Orange
10	IN2	Analogue voltage input 2 (Maximum of 40V d.c. wrt 0v)	Blue
11	OV	OV power supply input	Black
12	V+	Positive power supply input (4V - 30V d.c.)	Red

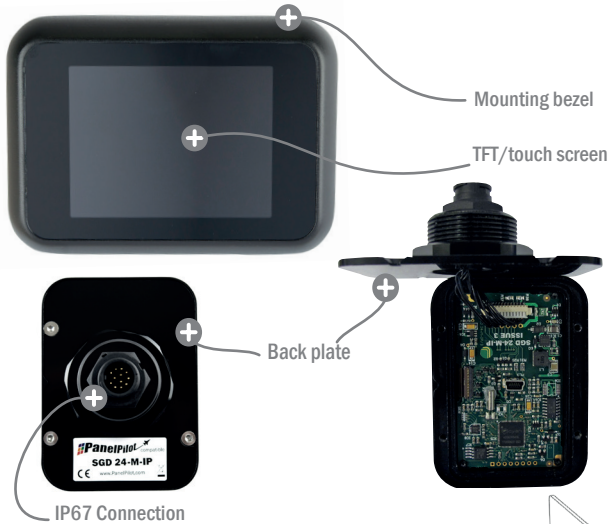


## Further Information

Visit [www.lascarelectronics.com/panelpilot](http://www.lascarelectronics.com/panelpilot) for further information on the PanelPilot platform and to download a datasheet for your particular display. This will include specific information about pin configurations, wiring instructions and mounting method.

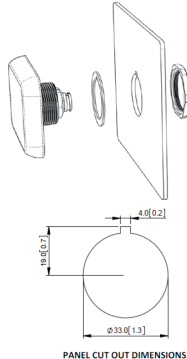
# Quickstart Guide

## Getting to know your display





### Panel Mounting Range

The SGD 24-M-IP can be fitted into panels of up to 10.5mm deep. A rubber seal is included to seal the mounting hole when the 32mm nut is fully tightened. Panel mounting hole cut-out is DIA 33mm.



## Configuring your display

- 1 Visit [www.lascarelectronics.com/software/panelpilot-m](http://www.lascarelectronics.com/software/panelpilot-m) to download PanelPilot M software onto your PC. 
- 2 Remove rear panel to access USB port and connect the device to your PC using the CABLE IP-12W-RA (not supplied). 
- 3 Open up the software on your PC and follow step-by-step instructions for configuring your display.



### What's in the box?

- Panel meter
- Fixing kit
- Quick start guide

### Accessories

- CABLE IP-12W-RA